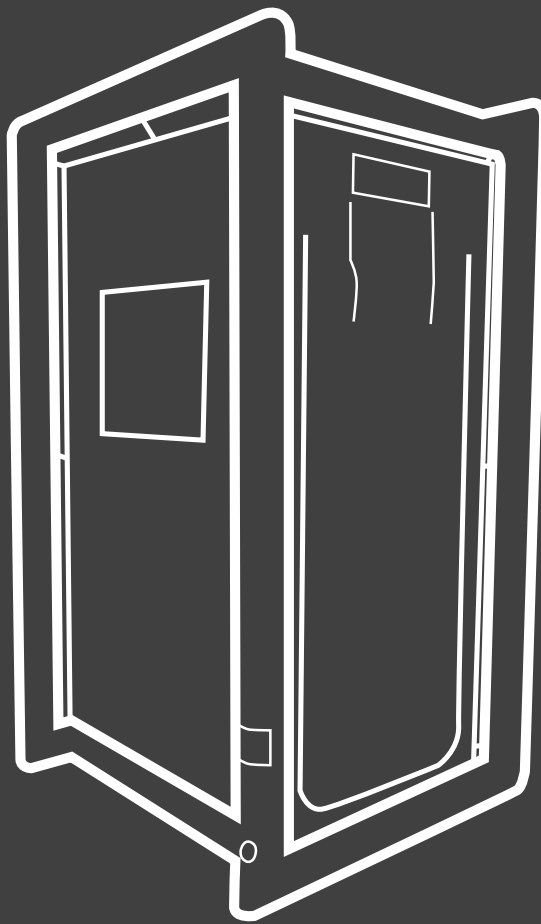


# Single Person Decontamination System



**MFC**International  
*by* RESPIREX

# CONTENTS

|    |                                      |
|----|--------------------------------------|
| 3  | SINGLE PERSON DECONTAMINATION SHOWER |
| 7  | INLET WATER PUMP                     |
| 8  | SUBMERSIBLE WATER PUMP               |
| 10 | DOSATRON & TROLLEY                   |
| 11 | PILLOW TANKS                         |
| 13 | PALLETS FOR SHOWER FLOOR             |
| 14 | PORTABLE GENERATOR                   |
| 15 | 32KW AIR HEATER                      |
| 16 | 80KW AIR HEATER                      |
| 17 | INTERNAL LIGHTING                    |
| 18 | RECHARGEABLE FLOODLIGHT              |
| 19 | CASUALTY CONVEYOR                    |
| 20 | ELECTRIC INFLATER                    |
| 21 | BALLAST BAGS                         |

# DECON SHOWER - SINGLE



Lightweight and quick to deploy, the inflatable Single Decontamination Shower from MFC International allows for rapid response in a decontamination scenario. Fully inflatable, the shower can be set up in a matter of minutes, and will stay standing without continuous inflation.

With no mechanical framework the shelters are lightweight to transport and compact to store. Showers can be used on hard or soft standing, and guy ropes are provided for securing in position during inclement weather.

## FEATURES

- Lightweight and easily portable
- Set up within a matter of minutes and will stay standing without continuous inflation
- Raised floor panels prevent contact with contaminated shower wash off which is collected in a PVC chemically resistant sump
- Sleeves for pumped extraction of contaminated water are included as standard
- Showers fitted with the optional gloves include sleeves with chemical resistant nitrile rubber gloves on the side of the shower to allow a second person to help wash down the contaminated person
- Can be used on hard or soft standing and guy ropes are provided for securing in position
- Minimal training, servicing and maintenance costs
- Available in Yellow PU material or Orange PVC material

Raised floor panels prevent contact with contaminated shower wash-off, which is collected in a chemically resistant sump. Sleeves for pumped extraction of contaminated water are included as standard.

Single Decontamination Showers come with a viewing window and optional chemical resistant nitrile rubber gloves to allow assisted decontamination by a third party stood outside of the unit.

## USED FOR

- Decontamination scenarios

## SUPPLIED WITH

- Valise
- Repair kit
- Inflation hose - 1m (for use with 8 bar regulator)

## OPTIONS & ACCESSORIES

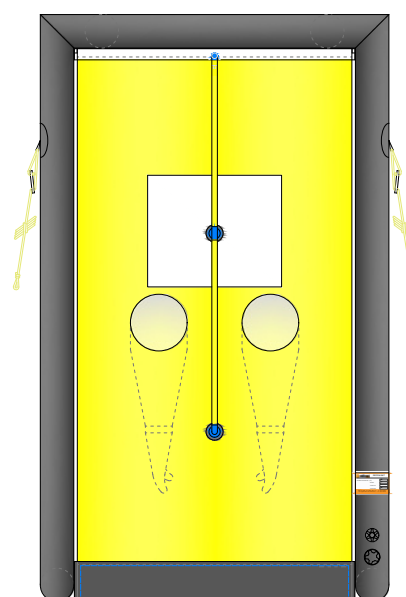
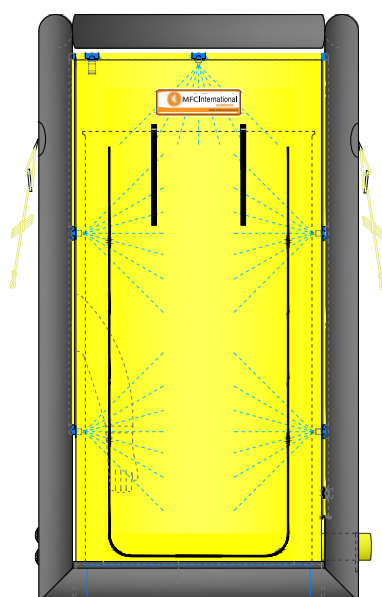
- Customer branding
- Electric inflator
- 8 bar regulator

# DECON SHOWER - SINGLE

| TECHNICAL DATA                         | Single - Without Gloves | Single - With Gloves |
|--|-------------------------|----------------------|
| Product Code (Yellow PU)               | DSW0022                 | DSW0022/002          |
| Product Code (Orange PVC)              | DSW0022/003             | DSW0022/004          |
| Length (cm)                            | 156                     | 156                  |
| Int. Length (cm)                       | 123                     | 123                  |
| Width (cm)                             | 143                     | 143                  |
| Int. Width (cm)                        | 110                     | 110                  |
| Height (cm)                            | 263                     | 263                  |
| Int. Height (cm)                       | 243                     | 243                  |
| Working Pressure (bar)                 | 0.55                    | 0.55                 |
| No. of chambers                        | 1                       | 1                    |
| Air Requirements (ltr)                 | 400                     | 400                  |
| Max. Water Inlet Pressure (bar)        | 3                       | 3                    |
| Recommended pump flow-capacity (ltrs)  | 5 ltr/min per nozzle    | 5 ltr/min per nozzle |
| Number of Shower Nozzles               | 5                       | 5                    |
| Number of Shower Hose/Brush Connectors | 1                       | 1                    |
| Number of Tubing Sleeves,              | 2                       | 2                    |
| Pack size (cm)                         | 70 x 45 x 30            | 70 x 45 x 30         |
| Weight (kg)                            | 25                      | 25                   |



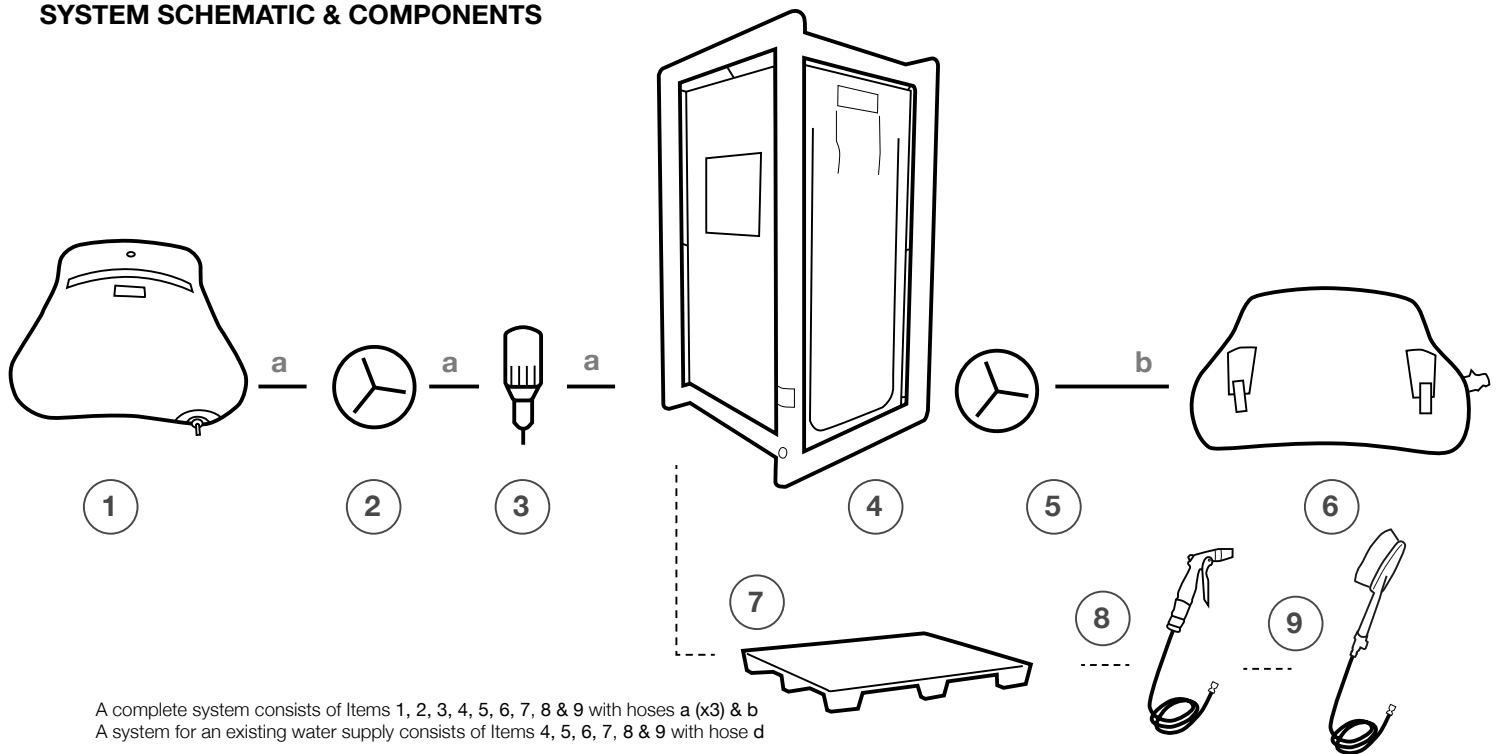
## DETAIL DRAWING



Shown with optional gloves

# DECON SHOWER - SINGLE

## SYSTEM SCHEMATIC & COMPONENTS



1



**Clean Water Pillow Tank (1000ltr)**  
 (x1 WS0028)  
 - see website for other sizes

2



**Inlet Water Pump**  
 (x1 DSA002)

3



**Dosatron with Trolley**  
 (x1 DSA005)

4



**Single Decon Shower**  
 (Yellow shower DSW022)  
 (Yellow shower with gloves DSW022-002)  
 (Orange shower DSW022-003)  
 (Orange shower with gloves DSW022-004)

5



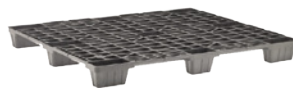
**Submersible Pump**  
 in Single Decon  
 (x1 DSA004 - 240V,  
 DSA003 - 110V)

6



**Waste Water Pillow Tank (1000ltr)**  
 (x1 WS0017)  
 - see website for other sizes

7



**Pallet for Single Decon**  
 (x1 DSA007)

8



**Spray Gun & Hose**  
 (DSA008)

9



**Hand Brush & Hose**  
 (180035)

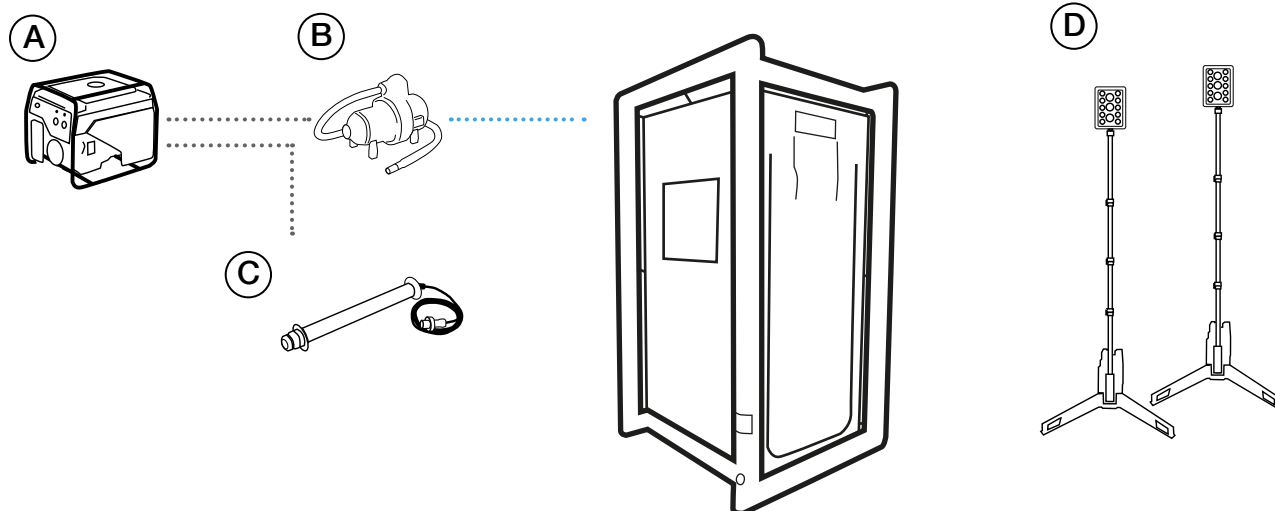
**a** **Green Hose - Clean Water (2m)**  
 Female to Female Camlock Hose  
 (3x 630004)

**b** **Clear Hose - Waste Water (3.5m)**  
 Female to Female Camlock Hose  
 (1x 630006)

**N.B.** CAMLOCK couplings used on components and hoses as standard, other couplings are available on request.

# DECON SHOWER - FOUR PERSON

## ACCESSORY SCHEMATIC



(A)



**Generator**  
Honda 5.5kW 4-stroke petrol  
(1x EG5500CL)

(C)



**Waterproof LED Interior Lights**  
23W, 2300 Lumens  
(1x SLZ2323/5/01DWD - IP67 Lamp)  
(1x SLZ005 - Hanging kit)

(B)



**Electric Inflator**  
Bravo 2000 - 2kW, 230VAC  
(1x 180026)  
*Equipment for inflation from compressed  
air cylinder also available*

(D)



**Waterproof LED Exterior Rechargeable  
Flood Lights - Max 16,000 Lumens**  
(2x NSSOLARISPRO)

# INLET WATER PUMP



Our inlet water pumps are close-coupled self-priming centrifugal pumps with built-in ejector systems, designed to remain primed even in the presence of water-dissolved gases.

The extensive use of pressed stainless steel ensures a high-performance, durable and lightweight pump. Suitable for use with drinking water.

## APPLICATIONS

- Water distribution
- Pressure boosting
- Irrigation
- Washing
- Rain water collection
- Swimming pools
- Fountains

## PUMP MATERIALS

- Pump body: **Stainless steel**
- Impeller: **Stainless steel**
- Diffuser: **Technopolymer**
- Ejector: **Technopolymer**
- Seal housing: **Stainless steel**
- Mechanical seal: **Ceramic / Carbon / EPDM**
- Fill and drain plugs: **Nickel-plated brass**
- Elastomers: **EPDM**

## TECHNICAL DATA

### INLET WATER PUMP

|                         |  |
|-------------------------|--|
| Product Code            | DSA002                                   |
| Delivery                | Up to 4.2m³/h                            |
| Head                    | Up to 53m                                |
| Power Supply            | Single-phase and three-phase 50 and 60Hz |
| Power                   | 0.37kW to 1.1kW                          |
| Max. Operating Pressure | 8 bar                                    |
| Max. Total Lift         | 8m                                       |

### INLET WATER PUMP

|                              |                |
|------------------------------|----------------|
| Max. Ambient Temperature     | 40°C           |
| Temperature of Pumped Liquid | -10°C to +40°C |
| Insulation Class             | F              |
| Protection                   | IP55           |



# SUBMERSIBLE WATER PUMP



Our submersible drainage pump has a compact footprint and features an integral float switch. Ideal for use in narrow spaces where automatic operation is required, the submersible pump is suitable for transferring water containing small particles (up to 5mm).

Applications include draining basements, wells and narrow sumps, emptying pools, fountains and excavations and lifting water from tanks. The submersible pump consumes 0.4kW, making it extremely efficient when used in automatic mode.

## FEATURES

- Made from anti-corrosive and dust-proof materials
- Integrated float switch makes pump suitable for use in narrow spaces
- Low suction capability down to 2mm
- Suitable for use with water containing particles up to 5mm
- Very low priming and starting level of the pump: 10-15mm (manual operation), 165mm (automatic operation)
- Selector for manual or automatic operation
- Easy access, through sliding cover, to float switch for cleaning
- Motor with thermal overload protection
- Excellent cooling of the motor that enables the pump to operate even when it is partially submerged
- 10 metre mains cable and moulded UK plug
- 1¼ inch top discharge, four-step hose tail supplied



# SUBMERSIBLE WATER PUMP

| TECHNICAL DATA           | 110V                                | 240V                                |
|--------------------------|-------------------------------------|-------------------------------------|
| Product Code             | DSA003                              | DSA004                              |
| Operation                | Automatic (integral float)          | Automatic (integral float)          |
| Dimensions (mm)          | 400 x 158 x 225                     | 400 x 158 x 225                     |
| Weight (kg)              | 5.1                                 | 5.1                                 |
| Construction             | Polypropylene                       | Polypropylene                       |
| Float Start Height (mm)  | 165                                 | 165                                 |
| Float Stop Height (mm)   | 65                                  | 65                                  |
| Flow Rate Max. (ltr/min) | 180                                 | 180                                 |
| Head Max. (mtr)          | 9                                   | 9                                   |
| Impeller Type            | Vortex                              | Vortex                              |
| Horse Power (HP)         | 0.55                                | 0.55                                |
| Power (kW)               | 0.4                                 | 0.4                                 |
| Voltage                  | 110                                 | 230                                 |
| Water Level Min. (mm)    | 2                                   | 2                                   |
| Water Temp Max. (°C)     | 35                                  | 35                                  |
| Motor Speed (rpm)        | 2800                                | 2800                                |
| Discharge Size           | 1¼ inch                             | 1¼ inch                             |
| Free Passage (mm)        | 5                                   | 5                                   |
| Pumped Medium            | Water and small particles up to 5mm | Water and small particles up to 5mm |
| Cable Length (mtr)       | 10                                  | 10                                  |

# DOSATRON & TROLLEY



Installed directly into the water supply line, the Dosatron operates by using the flow of water as the power source. The water activates the Dosatron, which takes up the required percentage of concentrate directly from the container and injects it into the water.

Inside the Dosatron, the concentrate is mixed with the water, and the water pressure forces the solution downstream. The dose of concentrate will directly proportional to the volume of water entering the Dosatron, regardless of variations in flow or pressure, which may occur in the main line.

The injection rate can be set by lining up the eyelet with the desired ratio on the scale. The amount of injected concentrate is proportional to the amount of water coming into the Dosatron: i.e. adjustment at 1% = 1: 100 = 1 volume of concentrate + 100 volumes of water.

The Dosatron comes with a compact portable trolley (complete with 25 liter barrel, bracket and suction tube) which makes mobile dosing easy and efficient.

| TECHNICAL DATA                        | DOSATRON UNIT           |
|---------------------------------------|-------------------------|
| Product Code                          | DSA005                  |
| Dimensions W x D x H (cm)             | 17 x 14 x 55            |
| Weight (kg)                           | 2                       |
| Injection Range                       | 0.03 - 25%              |
| Water Flow Range                      | 10 l/h - 3 m³/h         |
| Operating Pressure (bar/psi)          | 0.3 - 6 / 4.3 - 85      |
| Max. Operating Water Temperature (°C) | 40                      |
| Min. Operating Water Temperature (°C) | 5                       |
| Injection Check Valve                 | Spring loaded with seal |

| DOSATRON UNIT   |   |
|---|---|
| Dosing Rate   | <b>1:100</b><br>= 1 volume concentrate + 100 volumes of water |
| Average Dosing Accuracy                                   | +10%  |
| Motor Capacity  | 0.53L   |
| Maximum Vertical or Horizontal Suction of the Concentrate | 4m (13ft)   |

|           |   |
|-----------|---|
| Materials | Polypropylene, Polyethylene, Polyamide and PVDF |
|-----------|---|

| TROLLEY   |              |
|---|--------------|
| Dimensions W x D x H (cm)<br>- excluding Dosatron | 43 x 45 x 98 |



# PILLOW TANKS



Pillow Tanks provide a robust and quickly deployable solution for the storage and transportation of water. There are two ranges of pillow tanks- Potable and non-potable.

Manufactured with integrated handles and lifting points on larger sizes, MFC International Pillow Tanks are designed to be as easy as possible to transport when full. They come complete with restraining straps to limit movement during transportation and are suitable for use on various different vehicles, including on the back of a 4x4. When empty the Pillow Tank collapse down for compact storage and can be carried by 1-2 people.

Constructed from exceptionally strong and durable PVC material, Pillow Tanks provide a reliable solution for temporary or long term water storage.

They are very quick and straightforward to deploy and can be manufactured for potable drinking water, making them ideal for use in disaster relief situations.

MFC International Pillow Tanks are available in a range of sizes and colours, and we can offer a wide variety of fittings for filling and emptying the tanks. If you have specific requirements we are confident we can meet your needs.

## FEATURES

- Lightweight and easily portable when filled
- Suitable for use on various different vehicles
- Collapses down for compact storage when empty
- Exceptionally tough and durable
- A reliable solution for temporary or long term water storage
- Quick and straightforward to deploy
- Potable (drinking water) and non potable versions
- Minimal training, servicing and maintenance costs

## USED FOR

- Disaster Relief
- Temporary drinking water
- Contaminated water during decontamination

# PILLOW TANKS

## TECHNICAL DATA

|                           | 250    | 400    | 500    | 1000   | 5000   | 10000  |
|---------------------------|--------|--------|--------|--------|--------|--------|
| Product Code: Potable     | WS0025 | WS0026 | WS0027 | WS0028 | WS0029 | WS0030 |
| Product Code: Non-Potable | WS0014 | WS0015 | WS0016 | WS0017 | WS0018 | WS0024 |
| Capacity (litres)         | 250    | 400    | 500    | 1,000  | 5,000  | 10,000 |
| Length (cm)               | 90     | 117    | 117    | 150    | 400    | 510    |
| Width (cm)                | 80     | 75     | 95     | 150    | 225    | 220    |
| Height (when full) (cm)   | 35     | 53     | 53     | 55     | 57     | 100    |

**Note:** Other sizes may be produced to order.

## SUPPLIED WITH

- 2.5" Coupling complete with ball valve
- Carrying handles (x4)

## OPTIONS

- Alternate couplings
- Repair kit

# PALLETS FOR SHOWER FLOOR



Our decontamination shower flooring pallets are manufactured from high-quality plastic which gives them greater stability compared to standard pallets.

They are lightweight, nestable, easily portable and suitable for worldwide export. The pallets can also withstand deep freezing and steam cleaning.

## FEATURES

- Space saving nestable design to minimise storage
- Extremely tough, resistant to acids, chemicals and solvents
- Conforms to export standards without any treatment
- Submersible pump pallet version includes a cut-out to allow the pump to sit at the bottom of the shower sump

| TECHNICAL DATA                        | STANDARD PALLET    | SUBMERSIBLE PUMP PALLET |
|---------------------------------------|--------------------|-------------------------|
| Product Code                          | 140027             | DSA007                  |
| Dimensions (mm)                       | 1200 x 1000 x 140  | 1200 x 1000 x 140       |
| Material                              | Polypropylene (PP) | Polypropylene (PP)      |
| Weight (kg)                           | 6.2                | 6.2                     |
| Load Capacity - Static (kg)           | 1800               | 1800                    |
| Load Capacity - Dynamic (kg)          | 1000               | 1000                    |
| Colours Available                     | Black              | Black                   |
| Includes Cut-out for Submersible Pump | No                 | Yes                     |

# PORTABLE GENERATOR



A portable generator with a maximum output of 5.5kW, combining superb durability and value, with the power stability required for modern equipment. For tasks such as powering tools and incandescent lamps simultaneously, the new Digital AVR delivers smoother power with greatly reduced risk of light flicker or damage to sensitive electronics. Simple yet rugged design features also make the EG5500CL easy to use, with centralised controls and outlets, full tubular frame and a large fuel tank to give 8 hours of continuous running time at rated power.

Powered by the ultra reliable Honda GX390T2 4-stroke petrol engine which uses a recoil starter mechanism is light and smooth and starts easily every time. With 45 degree inclined rubber engine mounts, vibration is dampened to an industry leading standard, making this generator far more comfortable to use. The Honda 4-stroke engine is remarkably fuel efficient and reliable, which means fewer fill-ups and reduced maintenance costs. Also the Oil-Alert Technology will automatically switch off the ignition if the oil drops below a safe level.

## FEATURES

- Class leading fuel efficiency delivers over 8 hours of run time.
- Quiet operation from semi-enclosed casing.
- Easy to use controls allowing quick and simple starting and running.
- Rubberised feet to minimise vibration and movement, maximising frame and engine life.
- Digital D-AVR ensures a smooth and stable voltage output similar to an inverter generator, ideal for powering sensitive electronics and tools with flicker-free lighting

## USED FOR

- Shelters
- Decontaminations Showers

## TECHNICAL DATA

|                             |                                |
|-----------------------------|--------------------------------|
| Product Code                | EG5500CL                       |
| Product Name                | Honda EG5500CL                 |
| Fuel                        | Petrol                         |
| Starter                     | Recoil                         |
| KVA                         | 5,500                          |
| Phase                       | Single Phase                   |
| Voltage                     | 230                            |
| Rated Frequency (Hz)        | 50Hz                           |
| Fuel Tank Capacity (Liters) | 24                             |
| Running Time                | 8 hrs 10 minutes @ rated power |
| Noise Value                 | 82dB(A) @7M                    |
| Dimensions (mm)             | L 681 x W 530 x H 571          |
| Weight (kg)                 | 82.5                           |
| Kw                          | 5500                           |
| Sockets                     | 2 x 16a 115v, 1 x 32a 230v     |



# INTERNAL LIGHTING



Specialist LED lamps for use in inflatable shelters and decontamination showers.

These lamps feature a durable waterproof construction and using the hanging kit (sold separately), they secure easily around the tubes of the shelter frame.

## FEATURES

- Waterproof (IP 67) construction can be used in indoor or outdoor areas
- Impact resistant protective polycarbonate tube with two rubber protective cuffs
- Modular structure with plug and/or cable plug system integrated into the endcaps
- Cool running LED light source low heat development eliminates risk of burns or damage to shelter
- Instant illumination, even in low temperatures - no warm up or re-strike time

## ACCESSORIES

- Hanging Kit - pack of two metal retaining clamps with bungee cords for hanging LED tubes (SLZ005) - one hanging kit is required per lamp (see below)



## USED FOR

- Shelters
- Decontaminations Showers

## TECHNICAL DATA

|                    |                  |
|--------------------|------------------|
| Product Code*      | SLZ2323/5/01DWD  |
| Product Name       | ELSPRO LED Light |
| Power (Watts)      | 23               |
| Voltage (Volts)    | 230 AC           |
| Output (Lumen)     | 2,300            |
| Length (cm)        | 75               |
| Tube Diameter (cm) | 7                |
| Weight (kg)        | 595              |
| Cable Length (m)   | 5                |



# RECHARGEABLE FLOODLIGHT



Designed for temporary floodlighting of large areas. Easy to transport and assemble. Quick and easy to setup and can illuminate the scene for up to 48 hours.

These robust weatherproof lights are used by the police, fire and rescue teams and utility groups and are ideal for illuminating large areas.

## FEATURES

- Max 16,000 lumen output / 500m beam
- Two beams (wide & narrow) & three modes
- Can operate for up to 48 hours
- Mast extends to 1.85 metres height
- Power cord built into mast
- Collapses to compact size
- Supplied with AC Mains Charger
- Weather-proof IP65 rating

## USED FOR

- Shelters
- Decontaminations Showers



Light when folded

## TECHNICAL DATA

|                       | 18AH BATTERY | 38AH BATTERY   |
|-----------------------|--------------|----------------|
| Product Description   | SOLARIS PRO  | SOLARIS PRO-X  |
| Product Code          | NSSOLARISPRO | NSSOLARISPRO-X |
| Beam (m)              | Up to 500m   | Up to 500m     |
| Light Output (Lumens) |              |                |
| - Wide & Narrow Beams | 4,000-16,000 | 4,000-16,000   |
| - Search (Wide Beam)  | 1,250-5,000  | 1,250-5,000    |
| - Flood (Narrow Beam) | 2,750-11,000 | 2,750-11,000   |
| Run Time              |              |                |
| - Search & Flood      | 2h 15m - 9h  | 24h 30m - 18h  |
| - Search (Wide Beam)  | 6h - 24h     | 12h - 48h      |
| - Flood (Narrow Beam) | 3h 45m - 15h | 7h 30m - 30h   |
| Dimensions (cm)       | 52 x 16 x 20 | 52 x 16 x 20   |
| Weight (kg)           | 7            | 8.5            |

# ELECTRIC INFLATOR



The Bravo 2000 electric inflator consists of a main motor and a supplementary (booster) motor, which increases the capacity and pressure. The two motors can run simultaneously to obtain maximum capacity and pressure.

On the Bravo 2000, you can press the orange button to just run the main motor, or you can press the red button to switch on the booster to help obtain maximum performance. Both motors are protected by thermal fuses.

## FEATURES

- Inflates and deflates
- Has a robust outer steel casing for additional protection
- Fitted with main motor and a booster motor to increase capacity and pressure
- 3m integral mains power lead comes with 2 pin plug\*
- Comes with an inflation hose, 7 different adapters and a shoulder carry strap

## USED FOR

- Inflation/deflation of our inflatable product range

## TECHNICAL DATA

### Bravo 2000 Electric Inflator

|                |                                       |
|----------------|---------------------------------------|
| Product Code   | 180026                                |
| Voltage Supply | 230V (Main Motor) 230V (Booster)      |
| Max. Power     | 1000W / 2000W                         |
| Max. Pressure  | 140 mbar (2 psi) / 400 mbar (5.8 psi) |
| Max. Flow Rate | 1200 l/min / 2000 l/min               |
| Dimensions     | 32 x 17 x 26 cm                       |
| Weight         | 4.1 kg                                |

# BALLAST BAGS



Water filled ballast bags for use with the MFC range of inflatable shelters and decontamination showers. Ballast bags provide a quick and simple method of securing shelters on hard surfaces where they cannot be staked to the ground.

Bags use a watertight welded construction and are hold a maximum of 25 liters of water. They are designed to fit on the groundsheet skirt of MFC shelters or are strapped to the tubes of showers.

## TECHNICAL DATA

|  | Ballast Bag |
|--|-------------|
| Product Code                                     | WBB001      |
| Length (cm)                                      | 70          |
| Width (cm)                                       | 35          |
| Max Volume (L)                                   | 25          |
| Max Full Weight (kg)<br>(1l of water weighs 1kg) | 26.5        |

## BALLAST RECOMMENDATIONS

| SHELTER           | Bag Quantity | Ballast Weight |
|-------------------|--------------|----------------|
| SHW/09 (3 x 3m)   | 4            | 80kg           |
| SHW/12 (3 x 4m)   | 4            | 100kg          |
| SHW/16 (4 x 4m)   | 6            | 120kg          |
| SHW/20 (4 x 5m)   | 6            | 150kg          |
| SHW/25 (5 x 5m)   | 8            | 160kg          |
| SHW/30 (5 x 6m)   | 8            | 200kg          |
| SHW/36 (6 x 6m)   | 10           | 250kg          |
| SHW/51 (6 x 8.5m) | 12           | 300kg          |







**MFC**International  
*by* RESPIREX

**MFC International Ltd**

Naval Yard, Tonypandy,  
Rhondda Cynon Taff, CF40 1JS  
🌐: [www.mfc-international.com](http://www.mfc-international.com)  
☎: +44 (0) 1443 433 075  
✉: [sales@mfc-international.com](mailto:sales@mfc-international.com)