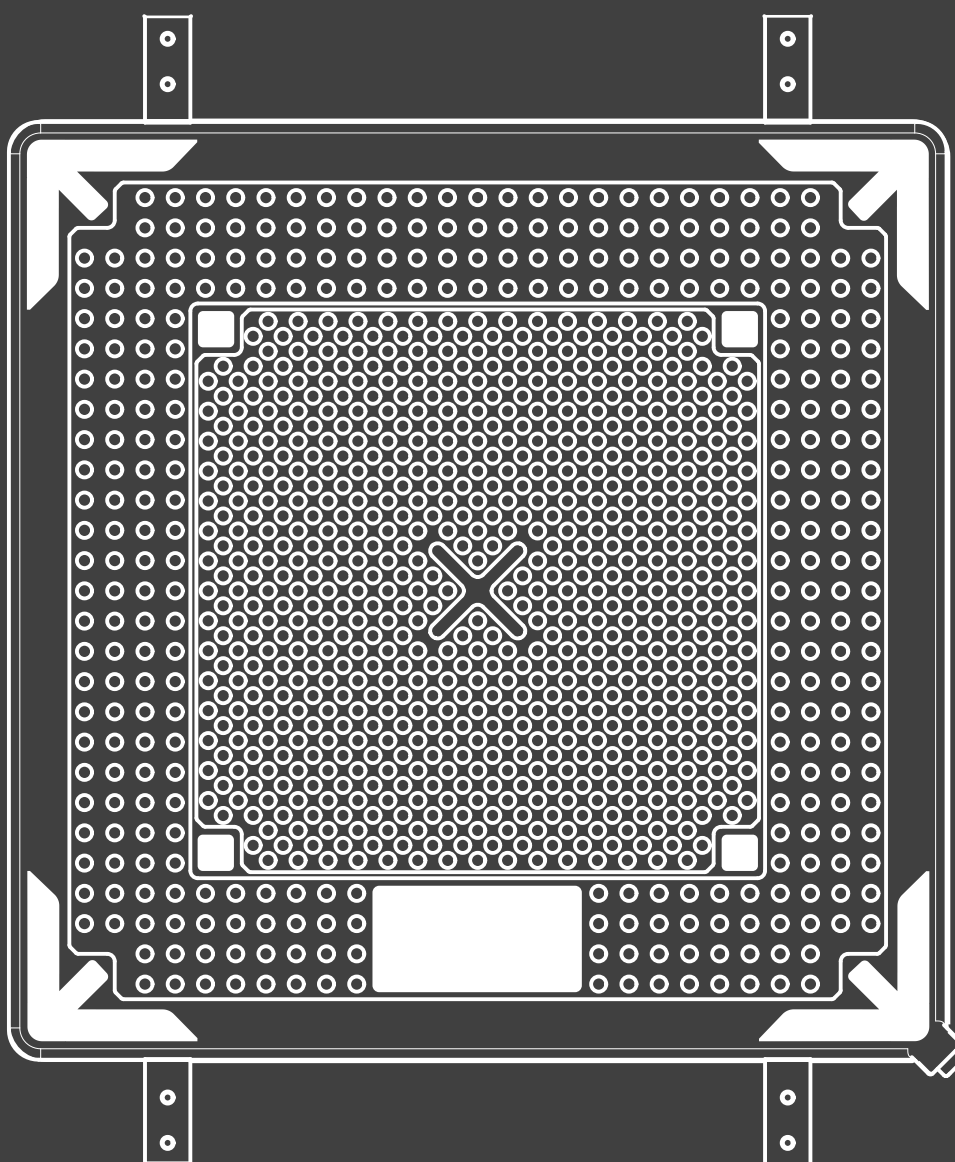


STAKJAK

8 BAR



MFCInternational
by RESPIREX

CONTENTS

3	STAKJAK 8 BAR
7	ALUMINIUM CONTROLLERS
8	HANDHELD CONTROLLERS
9	STANDARD REGULATOR
10	HOSES

STAKJAKS - 8 BAR



The StakJak high-pressure lifting bag is a revolutionary flat-profile lifting bag for vehicle and heavy duty lifting requirements. The flat profile of the StakJak has several distinct advantages over traditional ovoid lifting bags of which the most significant is the ability to safely stack up to three bags together. This enables a greater lift height without the risk of sudden ejection or instability that is possible when stacking ovoid bags.

In addition, the StakJak high-pressure lifting bags are not subject to the diminishing lift capacity experienced with ovoid mats. Complicated graphs and uncertain lifting heights and capacities do not need to be considered when using a StakJak, as they can lift their full height capacity (3.6 - 24.6 tonne depending on model) throughout the entire lift.

FEATURES

- Flat profile avoids diminishing lift
- Stack up three bags safely
- Lightweight and compact
- Controlled deflation facility
- Significantly more stable than an ovoid lifting bag
- Versatile - designed for emergency services but also used in industry, mining, railroads, armed forces, and caravan and static unit companies

StakJak lifting bags slim profile allow for use in tight spaces and reduce storage requirements. High pressure lifting bags (also sometimes called lifting mats) are constructed from exceptionally tough Kevlar cord, yet are light enough to be carried by just one person.

StakJak lifting bags can be inflated quickly to provide an instant lift, making them ideal for use in rapid response emergency situations. High pressure lifting bags of this type also have a controlled deflation facility if required, and can be supplied with an optional bleed valve on request.

USED FOR

- Road traffic incidents
- Light aircraft crash
- Rapid response rescue
- Raising submerged vehicles and small craft

COMPLIES WITH

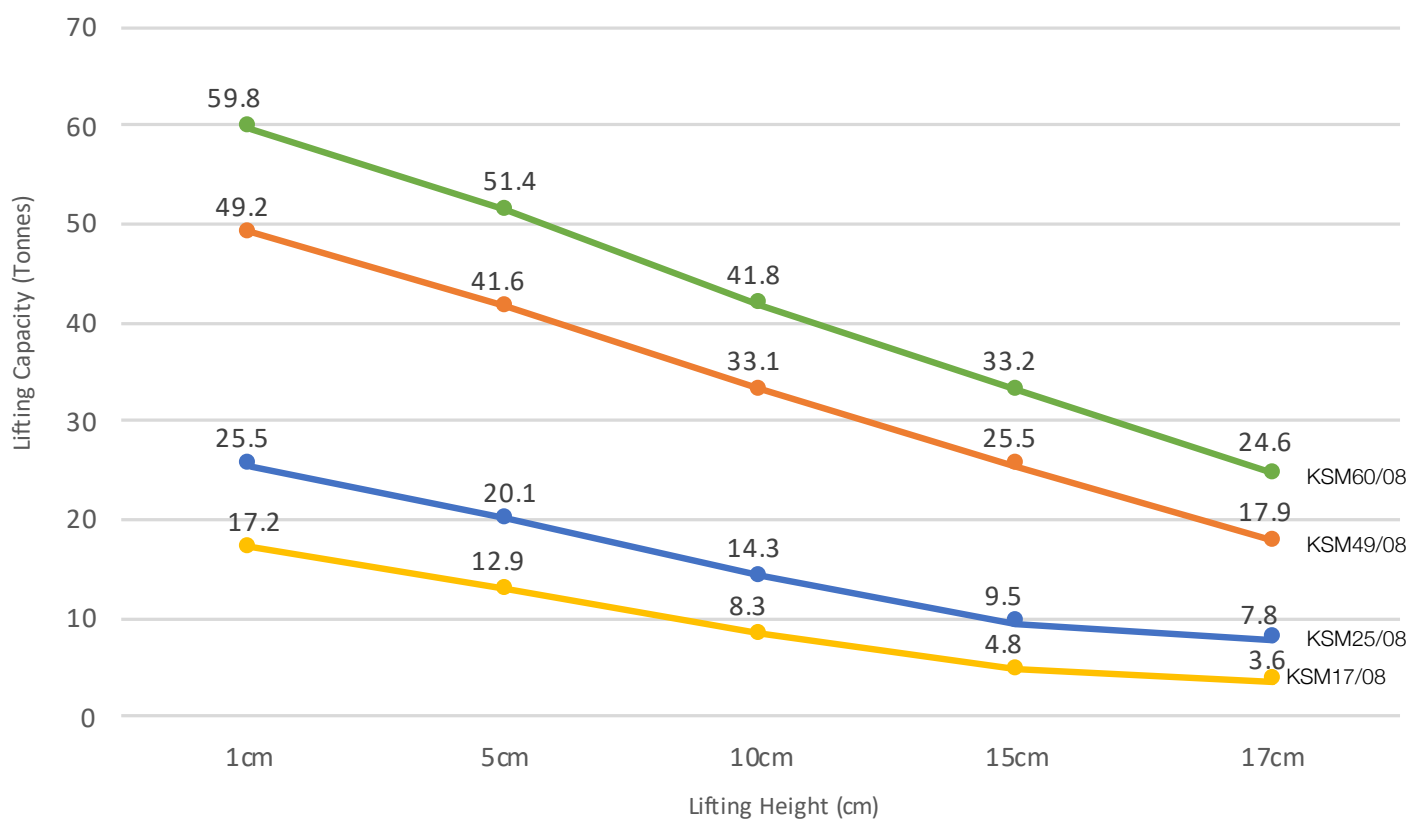
- EN 13731:2007 (independently tested)

STAKJAKS - 8 BAR

TECHNICAL DATA	KSM17 (8 BAR)	KSM25 (8 BAR)	KSM49 (8 BAR)	KSM60 (8 BAR)
Product Code	KSM17/08	KSM25/08	KSM49/08	KSM60/08
Length (cm)	52	62	84	92
Width (cm)	52	62	84	92
Inflated Height (cm)	17.5	17.5	17.5	17.5
Deflated Height (cm)	2.5	2.5	2.5	2.5
Packed Size (cm)	55 x 55 x 4	65 x 65 x 4	88 x 88 x 4	95 x 95 x 4
Max. Lift Capacity at Min. Lifting Height (tonne)	17.2	25.5	49.2	59.8
Max. Lift Capacity at Max. Lifting Height (tonne)	3.6	7.8	17.9	24.6
Max Flat Area (cm)	24 x 24	34 x 34	56 x 56	64 x 64
Air Requirements (litr)	305	465	893	1074
Weight (kg)	8	12	20	23
Max. Pressure (bar)	8	8	8	8

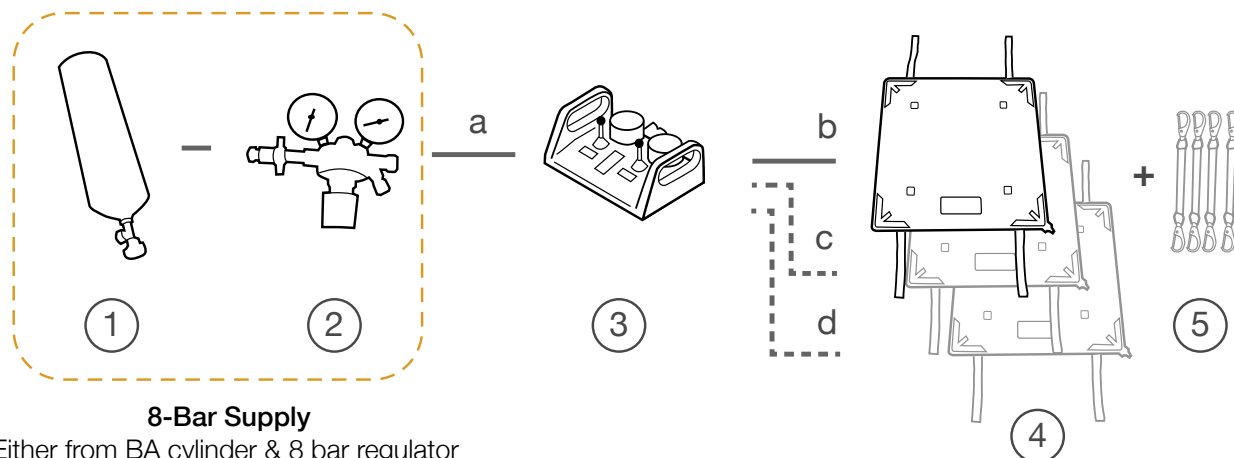


LIFTING HEIGHTS



STAKJAKS - 8 BAR

SYSTEM SCHEMATIC



SYSTEM COMPONENTS

①



BA Cylinder
(by others)


②




Regulator, 8 Bar
(Regulator only: RE0034,
Regulator & hose: RE0034/001)

Regulators are designed to be used with an air cylinder to reduce the amount of pressure which is leaving the cylinder and entering the inflatable product. The regulator contains an on/off valve which stops the air flowing through the hose.

③ **ONE BAG**




Single Handheld
Controller
8 bar / 116 psi
CO0074



Single Controller
8 bar / 116 psi
CO0052

TWO BAGS



Twin Handheld
Controller
8 bar / 116 psi
CO0074



Twin Controller
8 bar / 116 psi
CO0055

THREE BAGS



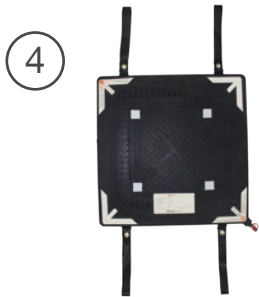
Triple Controller
8 bar / 116 psi
CO0058

MFC's 8 bar aluminium control units are robust and durable with an impact resistant design. The controller features a pressure sensitive 'deadman' control joystick and a pressure gauge with protective rubber surround for each controlled outlet. The body is made of aluminium with plastic protective handles at either end and models are available for control of one, two or three bags. The controller is supplied as standard with a female type 26 inlet coupling and Type 25 female couplings.

The push-button Handheld Controllers are compact and lightweight and can be easily operated with one hand. The aluminium body makes it durable and reduces weight. It is Ideal for use with low or high pressure lifting bags. Pressure gauges are recessed into the body for protection and versions are available with either 1 or 2 outlets.

STAKJAKS - 8 BAR

SYSTEM COMPONENTS (CONT.)



StakJak
(Select size from table)

	KSM17/08	KSM25/08	KSM49/08	KSM60/08
Lift Capacity Max / Min tonne (US ton)	17.2 / 3.6 (19.0 / 4.0)	25.5 / 7.8 (28.1 / 8.6)	49.2 / 17.9 (54.2 / 19.7)	59.8 / 24.6 (65.9 / 27.1)
Size L x W x H cm (inches)	52 x 52 x 2.5 (20.4 x 20.4 x 1")	62 x 62 x 2.5 (24.4 x 24 x 1")	84 x 84 x 2.5 (33.1 x 33.1 x 1")	92 x 92 x 2.5 (36.2 x 36.2 x 1")



Retaining Straps

Retaining straps are used to secure StakJaks to each other when used stacked together, reducing the risk of lateral movement of the bags during a lift.

- Dual bag retaining strap set (SP0068/001)
- Triple bag retaining strap set (SP0068/002)

HOSES



Inlet Hose [T.26M - T.26M]
(2m - HS-01-04-02-06-06)
(5m - HS-01-04-05-06-06)
(10m - HS-01-04-10-06-06)



Green Outlet Hose [S.25M-S.25F]
(5m - HS-01-02-05-06-07)
(10m - HS-01-02-10-06-07)



Red Outlet Hose [S.25M-S.25F]
(5m - HS-01-01-05-06-07)
(10m - HS-01-01-10-06-07)



Blue Outlet Hose [S.25M-S.25F]
(5m - HS-01-03-05-06-06)
(10m - HS-01-03-10-06-06)

SYSTEM KITS

ONE BAG SYSTEM

Required: **1***, **2***, **3** (Single bag controller), **4** (specify size) and hoses **a** and **b**

TWO BAG SYSTEM

Required: **1***, **2***, **3** (Twin controller), **4** (x2, specify size), **5** and hoses **a**, **b**, and **c**

THREE BAG SYSTEM

Required: **1***, **2***, **3** (Triple controller), **4** (x3, specify size), **5** and hoses **a**, **b**, **c** and **d**

** if not using a compressor*

ACCESSORIES



HP Shut-off Hose
(SP0154)

Inserted between the lifting bag (4) and the outlet hose (b, c or d) the 0.5m yellow shut off-hose incorporates a ball valve which allows the operator to keep the lifting bag inflated and disconnect the outlet hose.

NOTE: it is not recommended to leave a lifting bag disconnected & inflated unless the load is supported by chocks

CONTROLLER - ALUMINIUM



The Aluminium Control Unit is a robust and durable controller with an impact resistant design. The body is made of aluminium with plastic protective handles at either end and models are available for use for use with MFC International's low pressure and high pressure lifting bags.

FEATURES

- Lightweight and easily portable
- Pressure gauges have a rubber protective surrounds
- Housing available in yellow as standard, other colours available on request
- Pressure sensitive 'deadman' control joystick for each outlet
- Can be operated with compressor, SCBA breathing air cylinder and regulator or truck brake air source
- Models available for either 1 bar, 8 bar or 12 bar control
- Available with 2 or 3 outlets (for individual control of up to three mats or a single three tier bag)

Twelve bar aluminium controllers are supplied as standard with a female type 26 inlet coupling and Type 25 female outlet couplings; other couplings are available on request.

USED FOR

- Crisis rescue
- Road traffic Accidents
- Lifting light aircraft and vehicles

TECNICAL DATA	DOUBLE OUTLET	TRIPLE OUTLET	INLET COUPLING	OUTLET COUPLINGS	RECOMMENDED REGULATOR
Product Code (8 bar models)	CO0055	CO0058	Type 26 Female	Series 25 Female	8 bar

CONTROLLER - HAND HELD



The push-button Handheld Controller is compact and lightweight and can be easily operated with one hand.

The aluminium body makes it durable and reduces weight. It is Ideal for use with low or high pressure lifting bags.

FEATURES

- Lightweight and easily portable
- Pressure gauges are recessed into the body for protection
- Different colours available
- Textured rubber hand grip ideal for cold/hot climates, provides a positive grip when wet or icy
- Can be operated with compressor, SCUBA breathing air cylinder and regulator or truck brake air source
- Available in either 3 bar or 8 bar.

- Available with 1 or 2 outlets
- Housing available in yellow as standard, other colours available on request

USED FOR

- Crisis rescue
- Road traffic accidents
- Lifting light aircraft and vehicles

PRODUCT CODES	1 OUTLET	2 OUTLETS	OUTLET COUPLING	RECOMMENDED REGULATOR
8 Bar Controller	CO0074	CO0076	S. 25 Female	8 Bar

Alternate couplings available on request

STANDARD REGULATOR



The Standard Regulator is designed to be used with an air cylinder to reduce the amount of pressure which is leaving the cylinder and entering the inflatable product.

The regulator contains a shut off valve which stops the air flowing through the hose.

FEATURES

- Manufactured to ISO 2503
- Max. Input pressure 300 Bar
- Available in 8 bar or 12 bar output
- Available as a regulator only or with attached hose and coupling/fitting
- Supplied with padded storage box

USED FOR

- Reducing BA cylinder pressure for inflation of rescue equipment

SUPPLIED WITH

- Hard shell carry case

TECHNICAL DATA

8 BAR REGULATOR

Single Stage Regulator	8 bar
Product Code (regulator only)	RE0034
Product Code (regulator & 2m 'lifting bag' hose) <i>With Series 26 male outlet for lifting bag controllers</i>	RE0034/004
Max. Pressure Gauge	0-400 / 300 bar
Working Gauge	0-16 / 8 bar
Max. Inlet Pressure	300 bar
Working Pressure	0-8 bar adjustable
Max. Output	30 m ³ /h compressed air at 8 bar
Pack Size (mm)	210 x 195 x 75
Weight (kg)	1.5
Outlet Coupling (regulator)	Series 26 Female

HOSES



MFC international manufacture a range of hoses for use with our inflatable product range, including high and low pressure air hoses and water hoses for decontamination and water storage systems.

Hoses are available in a range of colours and sizes and with a wide variety of couplings. Our standard hose range is designed to ensure that all of our equipment connects together effortlessly, but alternate couplings to match pre-existing equipment are available if required - see the special order sheet at the back.

FEATURES

- Lengths from 1 to 10m
- Available in a range of colours for easier identification when using multiple lifting bags
- Wide range of coupling options

ACCESSORIES

- Shut-off valve
- Y-piece

USED FOR

- Lifting bags
- Inflatable rescue equipment
- Decontamination showers
- Water storage equipment
- Inflatable packers

HOSES



HIGH PRESSURE OUTLET AIR HOSES

Used to connect between controllers and high-pressure lifting bags

Colour	Length	Int./Ext. Diameter	Maximum Pressure	First Coupling	Second Coupling	Product Code
Red	2m	8/13mm	20 bar	S.25 Male	S.25 Female	HS-01-01-02-06-07
	5m	8/13mm	20 bar	S.25 Male	S.25 Female	HS-01-01-05-06-07
	10m	8/13mm	20 bar	S.25 Male	S.25 Female	HS-01-01-10-06-07
Green	2m	8/13mm	20 bar	S.25 Male	S.25 Female	HS-01-02-02-06-07
	5m	8/13mm	20 bar	S.25 Male	S.25 Female	HS-01-02-05-06-07
	10m	8/13mm	20 bar	S.25 Male	S.25 Female	HS-01-02-10-06-07
Blue	2m	8/13mm	20 bar	S.25 Male	S.25 Female	HS-01-03-02-06-07
	5m	8/13mm	20 bar	S.25 Male	S.25 Female	HS-01-03-05-06-07
	10m	8/13mm	20 bar	S.25 Male	S.25 Female	HS-01-03-10-06-07
Yellow	2m	8/13mm	20 bar	S.25 Male	S.25 Female	HS-01-04-02-06-07
	5m	8/13mm	20 bar	S.25 Male	S.25 Female	HS-01-04-05-06-07
	10m	8/13mm	20 bar	S.25 Male	S.25 Female	HS-01-04-10-06-07

INLET AIR HOSES

Used to connect between regulators and controllers



Colour	Length	Int./Ext. Diameter	Maximum Pressure	First Coupling	Second Coupling	Product Code
Yellow	2m	8/13mm	20 bar	S.26 Male	S.26 Male	HS-01-04-02-06-06
	5m	8/13mm	20 bar	S.26 Male	S.26 Male	HS-01-04-05-06-06
	10m	8/13mm	20 bar	S.26 Male	S.26 Male	HS-01-04-10-06-06



MFCInternational
by RESPIREX

MFC International Ltd

Naval Yard, Tonypandy,
Rhondda Cynon Taff, CF40 1JS
🌐: www.mfc-international.com
☎: +44 (0) 1443 433 075
✉: sales@mfc-international.com